



## Visit

The exhibit hall is open to the public. No reservation is required. Opening days and times are subject to change. Please check our website for the latest information.

Admission : Free

### Group visits

Two types of guided tours are available for groups of 5 to 20(incl attendants). For details, visit our website.

[https://global.jaxa.jp/about/centers/cac/tour.html#tab\\_area](https://global.jaxa.jp/about/centers/cac/tour.html#tab_area)

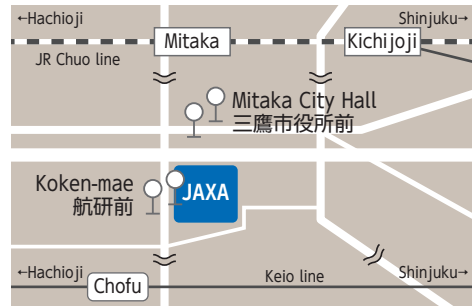


Guided tour 1	- Exhibit hall - For groups with general interests - 60 minutes
Guided tour 2	- Exhibit hall and one testing facility - For groups with in-depth interests (technical college students and above) - 90 minutes

## Notes

- Nine parking spaces for cars and one parking space for a bus are available, free of charge.
- No pets allowed. Service dogs are welcome.
- No eating or drinking in the exhibit hall.
- For groups of 10 or more, please contact us in advance.

## Access



JAXA Chofu Aerospace Center is about 20 minutes ride by taxi or bus from the nearest railway stations (Mitaka or Kichijoji on JR Chuo line or Chofu on Keio line).

### Contact

Chofu Aerospace Center  
Japan Aerospace Exploration Agency

### Address

7-44-1 Jindaiji Higashi-machi, Chofu-shi,  
Tokyo 182-8522

Email : [CAC-KENGAJU@jaxa.jp](mailto:CAC-KENGAJU@jaxa.jp)

Web : <https://global.jaxa.jp/about/centers/cac/>

Bus routes	Get off at
<b>From Mitaka station (south exit) on JR line</b>	
Bus stop 3	Koken-mae
Taka 65 (鷹65) for Jindaiji (深大寺)	
Taka 66 (鷹66) for Chofu station north exit (調布駅北口)	
Bus stop 7	Mitaka City Hall
Taka 54 (鷹54) for Sengawa (仙川) or Koka-gakuen-higashi (晃華学園東)	
<b>From Kichijoji station (south or park exit) on JR or Inokashira line</b>	
Bus stop 3	Mitaka City Hall
Kichi 01 (吉01) for Musashisakai station south exit (武蔵境駅南口)	
Bus stop 4	
Kichi 06 (吉06) for Chofu station north exit (調布駅北口)	
Bus stop 8	Koken-mae
Kichi 14 (吉14) for Chofu station north exit (調布駅北口)	
<b>From Chofu station (central exit) on Keio line</b>	
Bus stop 11	Koken-mae
Taka 66 (鷹66) for Mitaka station south exit (三鷹駅南口)	

This information is subject to change. Please check our website for updates.



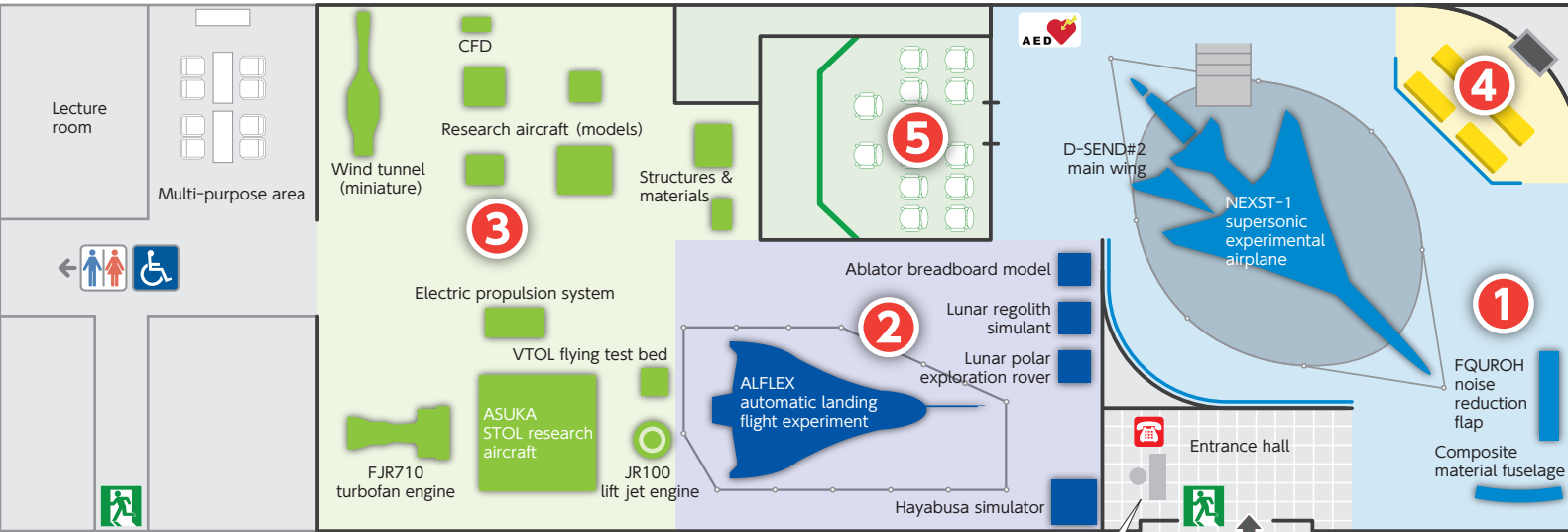
# Chofu Aerospace Center Exhibit Hall





# Exhibiting our achievements and ongoing research at Chofu Aerospace Center.

**Exhibit hall** Please note that the exhibits are subject to change without notice.



## 1 Aeronautical technology

Discover our research on aeronautical technology towards the sky of the future.

## 2 Space technology

Explore space technology for future missions.

## 3 Fundamental technology

Learn the fundamentals of aerospace technology and testing facilities.

## 4 Video theater

Enjoy a variety of videos concerning our R&D activities.

## 5 Space mission simulator

Fly to space in our future spaceplane simulator.

For YS-11 cockpit and space mission simulator, please contact us via the phone in the entrance hall.

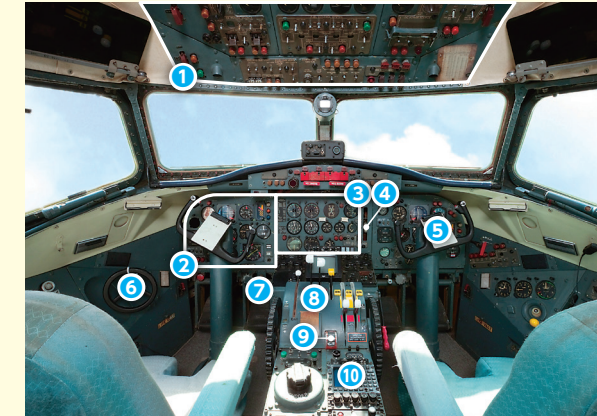
## YS-11 cockpit Open air exhibit



View the instruments and airframe structure of a retired YS-11 (aircraft registration YS-11-118).

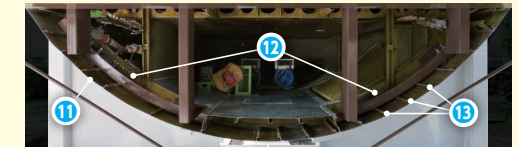
The other parts of the aircraft body are utilized in structure testing studies.

### Cockpit



- 1 Overhead panel
- 2 Flight instruments
- 3 Engine display
- 4 Landing gear lever
- 5 Control column
- 6 Steering wheel
- 7 Rudder pedal
- 8 Throttle lever
- 9 Flap lever
- 10 Autopilot

### Fuselage structure



- 11 Skin
- 12 Frame
- 13 Stringer

